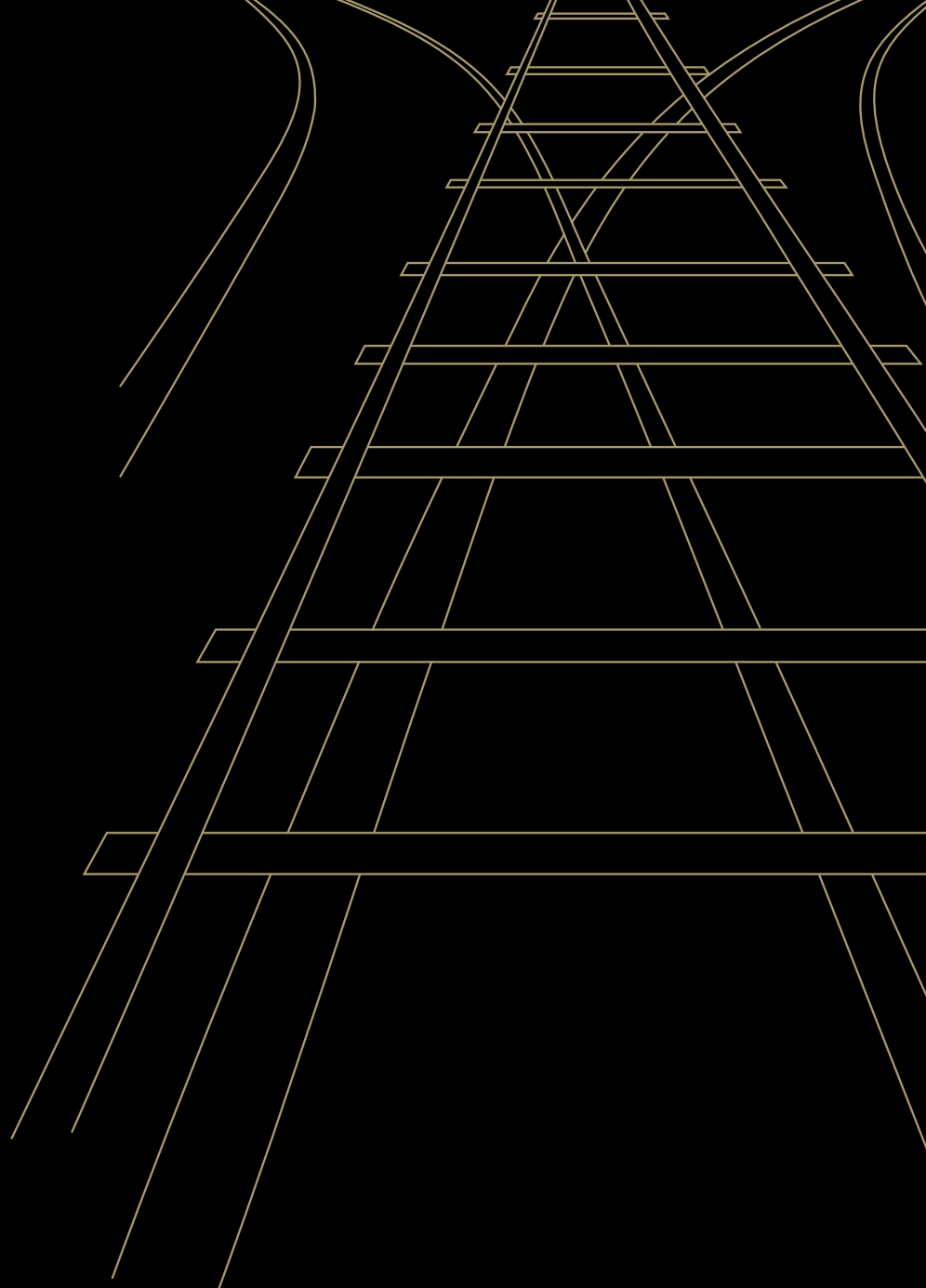
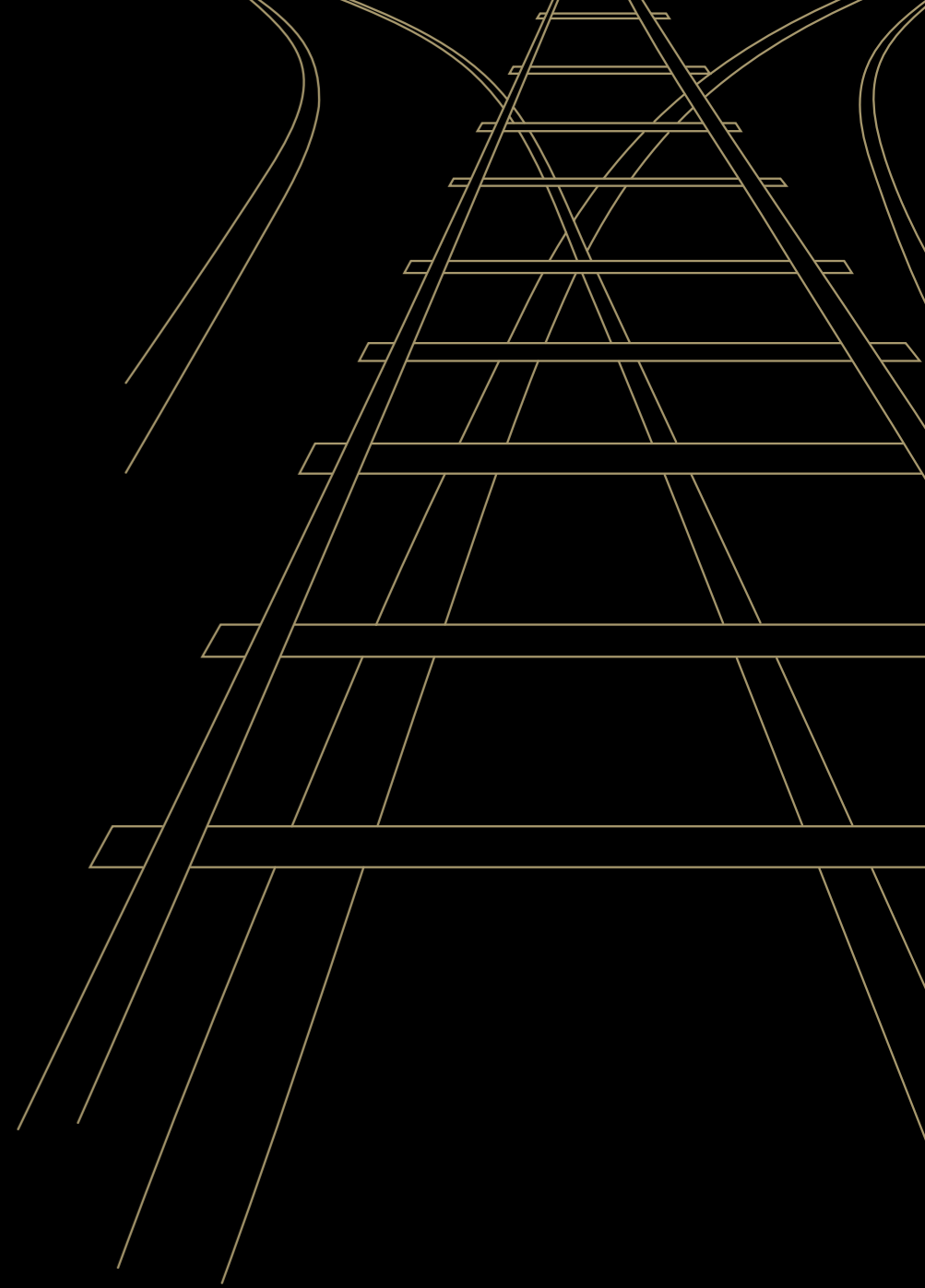


THE GROSVENOR HOTEL
VICTORIA



A new departure for us. A grand destination for you.





THE GROSVENOR HOTEL VICTORIA

When The Grosvenor Hotel opened in 1862, it was literally a landmark event. This was the first of London's great railway hotels, ushering in what would become the Golden Age of travel. Nothing like it had ever been seen in the capital before. Now, 150 years on, history is repeating itself.

We have invested £20 million in restoring this imposing listed building to its original Victorian splendour. The columns in the lobby have been stripped of decades-worth of paint to reveal the beautiful white marble underneath, while their capitals now gleam with new gold leaf. While carefully retaining the hotel's authentic spirit, we have also added some contemporary touches of our own, including the magnificent chandelier that dominates the reception hall. Welcome to The Grosvenor Hotel – and the start of a new Golden Age.



GRAND. DESIGN.

The Grosvenor is a London icon. Throughout our refurbishment, we have worked closely with experts from English Heritage to preserve its unique architectural features, including the lobby's grand marble staircase and pillars, the high windows and intricate plaster mouldings.

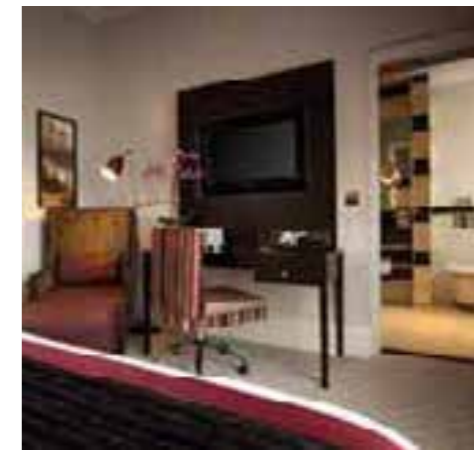
The result is a building that is grand yet never grandiose, imposing yet never intimidating, opulent yet always welcoming. By skilfully blending the ambition and confidence of a bygone age with the comforts and technology of our own, The Grosvenor offers you a truly unique hotel experience.



FIRST. CLASS.

When The Grosvenor first opened, travel was still a great adventure. Our spacious Deluxe bedrooms capture the glamour and opulence of the age, offering a relaxed, contemporary haven in the very heart of London.

Every Deluxe room incorporates comforts the Victorians could never have dreamed of, including air-conditioning and the finest Egyptian cotton bed linen. You will also find the very finest technology of our own era, like the 32" flat-screen television and Bose iPod docking station. These quiet, intimate rooms will make the city's bustle seem a million miles away.





LUXURY. SLEEPER.

You do not have to be with us on business to appreciate the extra space, comfort and luxurious touches offered by our Executive rooms. As well as a sofa and coffee table, your Executive room includes complimentary bathrobes, slippers and mineral water, making it the perfect place to work, meet, entertain or simply relax.





ULTIMATE. DESTINATION.

Our suites are the ultimate choice for a luxurious break with family and friends, or a longer stay in London. Take the private lift to the seventh floor and you will find our Palace Suite: four double en-suite bedrooms, living room and kitchenette, and long views down Buckingham Palace Road to the Royal Mews and the Queen's garden. Two further suites complete our selection of rooms, with all the indulgent finishing touches that will make your break in London extra special.

THE GROSVENOR HOTEL
VICTORIA



ELECTRIC. ATMOSPHERE.

In days gone by, The Grosvenor Hotel provided luxurious waiting facilities for passengers taking the famous Pullman boat-trains to and from the Continent. That historic French connection is celebrated in our new Réunion Bar.

As the name suggests, Réunion is a place to meet, catch up and spend time together over a glass of Champagne or one of our signature cocktails, all served with skill and panache by our expert bar team. Decorated in an eclectic mix of rich woods, leather, velvet, polished tile and glass, Réunion is a bright, welcoming yet intimate space, with views over the bustling station concourse.

Réunion
Champagne & Cocktail Bar

THE GROSVENOR HOTEL
VICTORIA

IMPECCABLE. TASTE.

Step out of the lobby's opulence into the relaxed, airy surroundings of The Brasserie and Lounge. Long famous for its traditional Afternoon Tea, the Lounge retains its much-loved Victorian elegance, complemented by our impeccable Guoman service.

The Brasserie and Bar offer informal dining in a warm, contemporary atmosphere. The materials and colour palette recall the Golden Age of travel in the 1930s, while the menu features classic favourites, plus a few surprises.



THE
BRASSERIE
AT THE GROSVENOR



THE GROSVENOR HOTEL
VICTORIA



ORIENT. EXPRESSED.

Everything about our new Grand Imperial restaurant is absolutely authentic, from the artwork and calligraphy to the exquisite Cantonese dim sum and seafood dishes prepared by renowned chef and restaurateur Rand Cheung. There are many surprising touches too, such as our range of signature Oriental tea blends and a unique selection of refreshingly original cocktails, with a clever Oriental twist.

Open from lunchtime until late every day, Grand Imperial also has a private dining room for up to 26 guests.



GRAND IMPERIAL
LONDON



THE GROSVENOR HOTEL
VICTORIA



CONNECTING. SERVICE.

We have created nine new meeting rooms on the first floor, each named after a famous luxury train. So you might bring eight board members together in The Pullman or The Ghan, invite 20 people to dine in The Scotsman or The Viceroy – or hire our magnificent Orient Suite for a gala dinner or society wedding with up to 110 guests. Whichever you choose, you will have access to our self-contained Business Centre, and the expert assistance of our dedicated Meetings & Events team.

All our meeting rooms offer satellite video conferencing, broadcast facilities and high-speed Wi-Fi connectivity.





THE GROSVENOR HOTEL
VICTORIA



AN INTERNATIONAL HOTEL BRAND.

The Guoman name is synonymous with excellence around the world. Each hotel in our collection has its own distinctive character, defined by its location, architecture, heritage and atmosphere. What unites them is the highest standards of comfort and service in the business: our own.

Those standards are upheld at The Grosvenor, our four other deluxe London hotels, and our magnificent hotel in Shanghai. Whichever you choose, you can be sure of exemplary service, and a hotel experience unlike any other. We invite you to discover our hotels – and see for yourself what makes them uniquely Guoman.



CHARING CROSS

THE CUMBERLAND

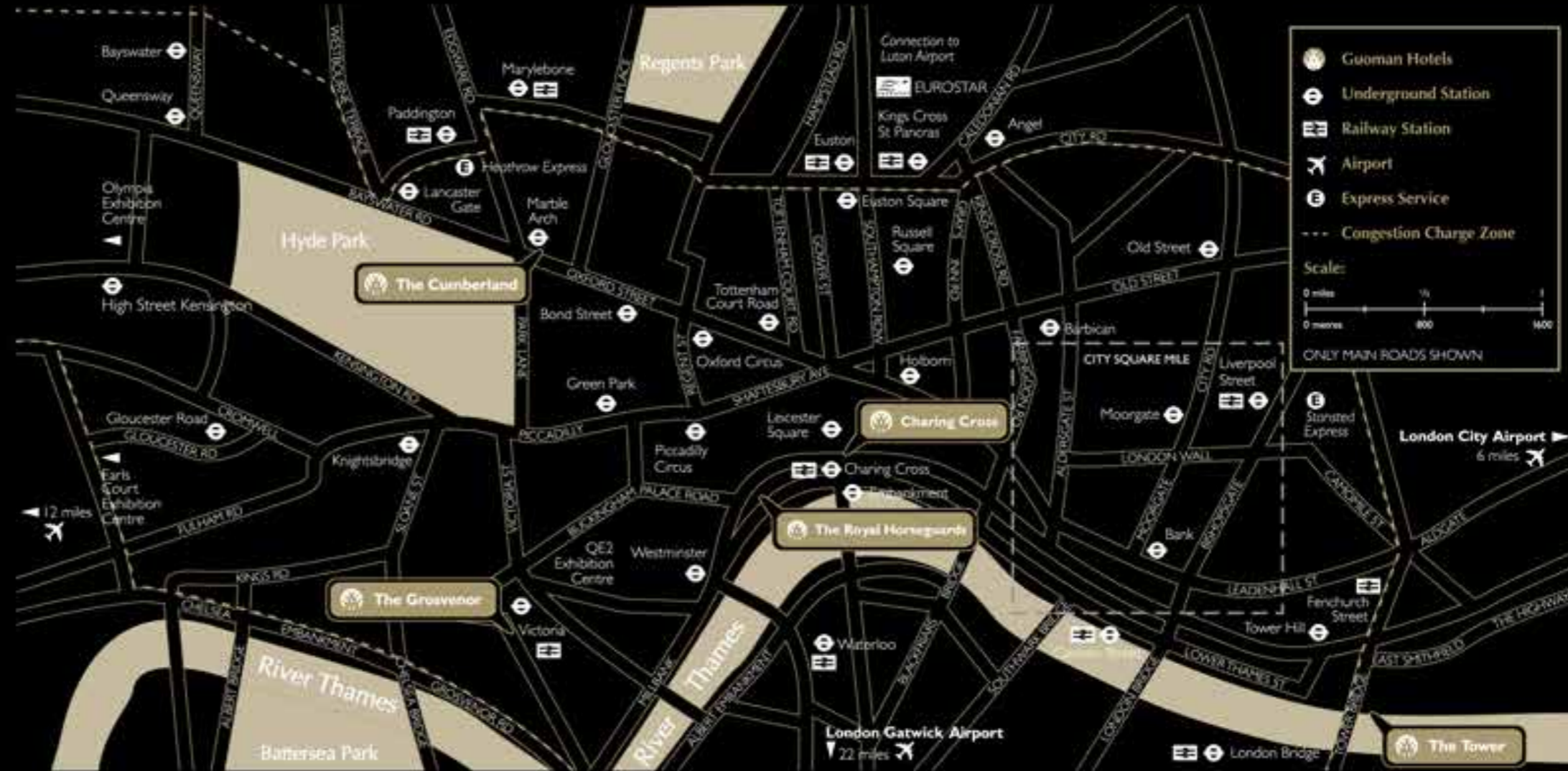
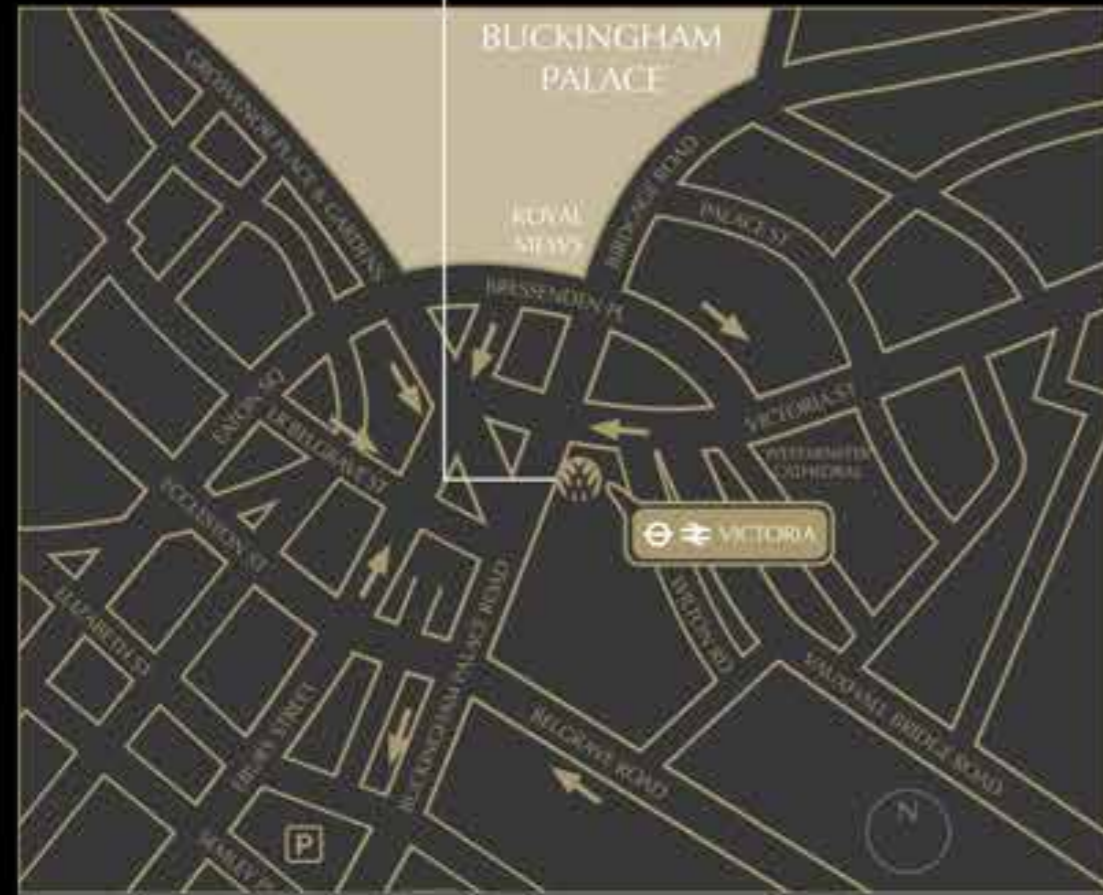
THE GROSVENOR HOTEL

THE ROYAL HORSEGUARDS

THE TOWER

GUOMAN HOTEL SHANGHAI

THE GROSVENOR HOTEL
VICTORIA



The Grosvenor Hotel, 101 Buckingham Palace Road, London SW1W 0SJ

T: 0871 376 9038 F: 0871 376 9138 E: grosvenor@guoman.co.uk

W: www.guoman.com

Calls to 0871 numbers are charged at 10p per minute plus any network extras

WWW.GUOMAN.COM